

S8 Valve Station

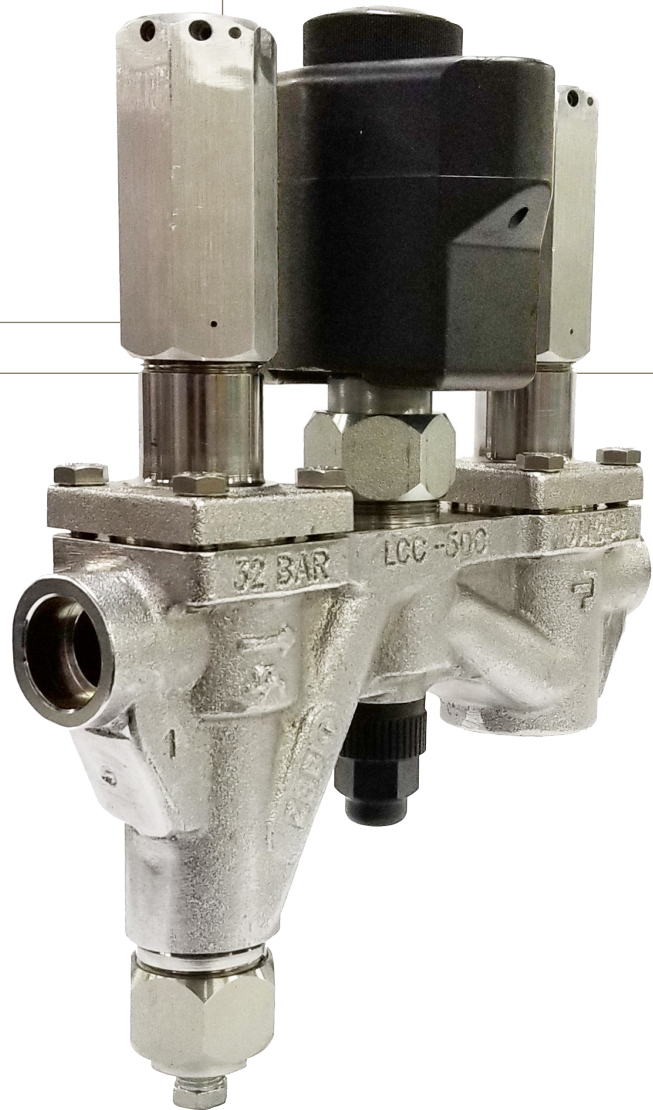
Data Sheet

Type: S8VS

Port Size: 15mm (1/2")

Purpose:

The S8VS provides a safe and economical solution for small capacity lines. These products feature a weld-in construction which offers increased safety over traditional two-bolt flange connections. These valve stations come standard with an integrated strainer which eliminates the need to order and install additional components. The S8VS is based on the proven S8F solenoid valves, RSF strainers, and R/S hand valves; sharing common components which reduces complexity and spare part requirements.



Contact Information:

Parker Hannifin Corporation
Refrigerating Specialties Division
2445 South 25th. Avenue
Broadview, IL 60155-3891

phone (708) 681-6300
fax (708) 681-6306

www.parker.com/refspec

Product Features:

- Suitable for ammonia and halocarbon refrigerants
- Integrated 60 mesh strainer
- Interchangeable components with S8F solenoids, RSF strainer, and R/S hand valves
- Comes standard with corrosion resistant plating
- Weld in design eliminates potential leak points
- Coils options to meet various applications
- Complies with PED 2014/68/EU
- DN15 (1/2") and DN20 (3/4") connections in SW, ANSI BW, or DIN BW designs
- Seal caps have integral wrench feature with provision for lock out / tag out or valve tag

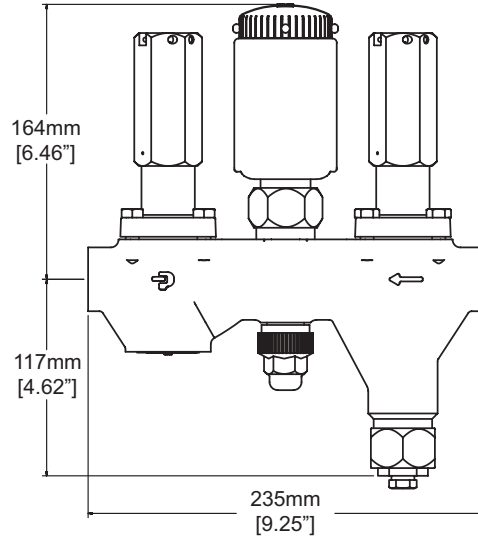
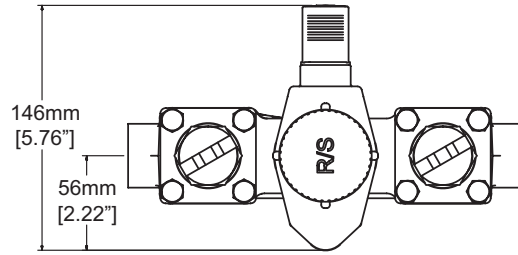


ENGINEERING YOUR SUCCESS.

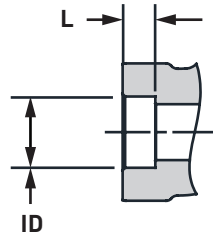
Technical Data

- Liquid Temperature Range:
-50°C to 105°C (-58°F to 221°F)
- Ambient Temperature Range:
During operation
-50°C to 60°C (-58°F to 140°F)
- Max Working Pressure:
32 bar (465 psig)
- MOPD:
21 bar (305 psid)
- Port Size:
DN15 (1/2")
- Connections (SW, ANSI BW, DIN BW):
DN15 (1/2")
DN20 (3/4")
- Position 4 options:
Isolation valve (hand shut off)
Stop expansion valve
Stop / check (coming soon)

Dimensional Data mm [inch]

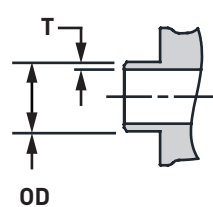


SW: Socket Weld ANSI



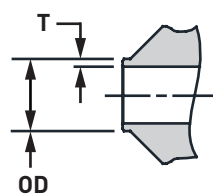
Socket Weld (SW) ANSI						
Port Size		Connection	L		ID	
mm	inch		mm	inch	mm	inch
15	1/2	1/2"	9.5	0.375	22.2	0.874
		3/4"	12.7	0.500	27.6	1.087

BW: Butt-Weld ANSI



Butt-Weld (BW) ANSI						
Port Size		Connection	T		OD	
mm	inch		mm	inch	mm	inch
15	1/2	1/2"	3.9	0.152	21.6	0.850
		3/4"	4.0	0.159	26.9	1.060

BW DN: Butt-Weld Metric



Butt Weld (BW) Metric						
Port Size		Connection	T		OD	
mm	inch		mm	inch	mm	inch
15	1/2	1/2"	2.5	0.099	22.0	0.866
		3/4"	3.0	0.118	28.0	1.102