

Electronic Valve

Data Sheet

Type: PEV

Port Sizes: 20mm - 40mm (3/4" - 1 1/2")

Purpose:

The Parker Electronic Valve (PEV) provides a new level of control to industrial refrigeration. Managing liquid levels in vessels, superheat for direct expansion, brine temperature in chillers and hot gas defrost are just few of many applications for the PEV.

For basic liquid level control the PEV can be used directly with the HBLT-Wire level probe without the need of a controller. For more advanced applications the PEV is compatible with the HBLT-C1 controller or any other controller with a 4-20 mA output signal.

The PEV weld-in valves are designed to overcome corrosion problems encountered in harsh environments. Being weld-in, the valves reduce the potential for connection leaks and can be entirely serviced from the top.



Contact Information:

Parker Hannifin Corporation
Refrigerating Specialties Division
2445 South 25th. Avenue
Broadview, IL 60155-3891

phone (708) 681-6300
fax (708) 681-6306

www.parker.com/refspec



Product Features:

- Stainless steel construction increases product life cycle
- Cartridge based design simplifies service and eliminates body wear
- Multiple capacity plugs available
- Increased flow capacity enables smaller valve sizing
- Removeable actuator
- Simple user interface (UI)
- Bright LED Display
- Suitable for ammonia, CO₂ and halocarbon refrigerants
- Multiple refrigerant capacities available
- Password protected prevents tampering
- Lightweight construction
- Alarm notification
- IP67/NEMA 6 rated
- Parker Fail Safe Module available

ENGINEERING YOUR SUCCESS.

Technical Data

- Liquid Temperature Range:
-60°C to 120°C (-76°F to 248°F)
- Ambient Temperature Range:
-40°C to 50°C (-40°F to 122°F)
- Max Rated Pressure (MRP):
52 bar (754 psig)
- Max Operating Pressure Difference (MOPD):

Port Size		MOPD
mm	inch	
20	¾	52 bard (754 psid)
25	1	
32	1¼	
40	1½	28 bard (406 psid)

- Operating Pressure Range:
500mm Hg to 52 bar (20in. Hg to 754 psig)

- Flow Coefficients:

Port Size		K _v	C _v
mm	inch		
20	¾	6.1	7.0
25	1	11.2	13.0
32	1¼	14.1	16.3
40	1½	26.9	31.1

- Power Supply Voltage:
24V DC @ 1.3 Amp

- Input Signal:
4 - 20 mA

- Port sizes ^[1]:
20mm (¾"), 25mm (1")
32mm (1¼"), 40mm (1½")

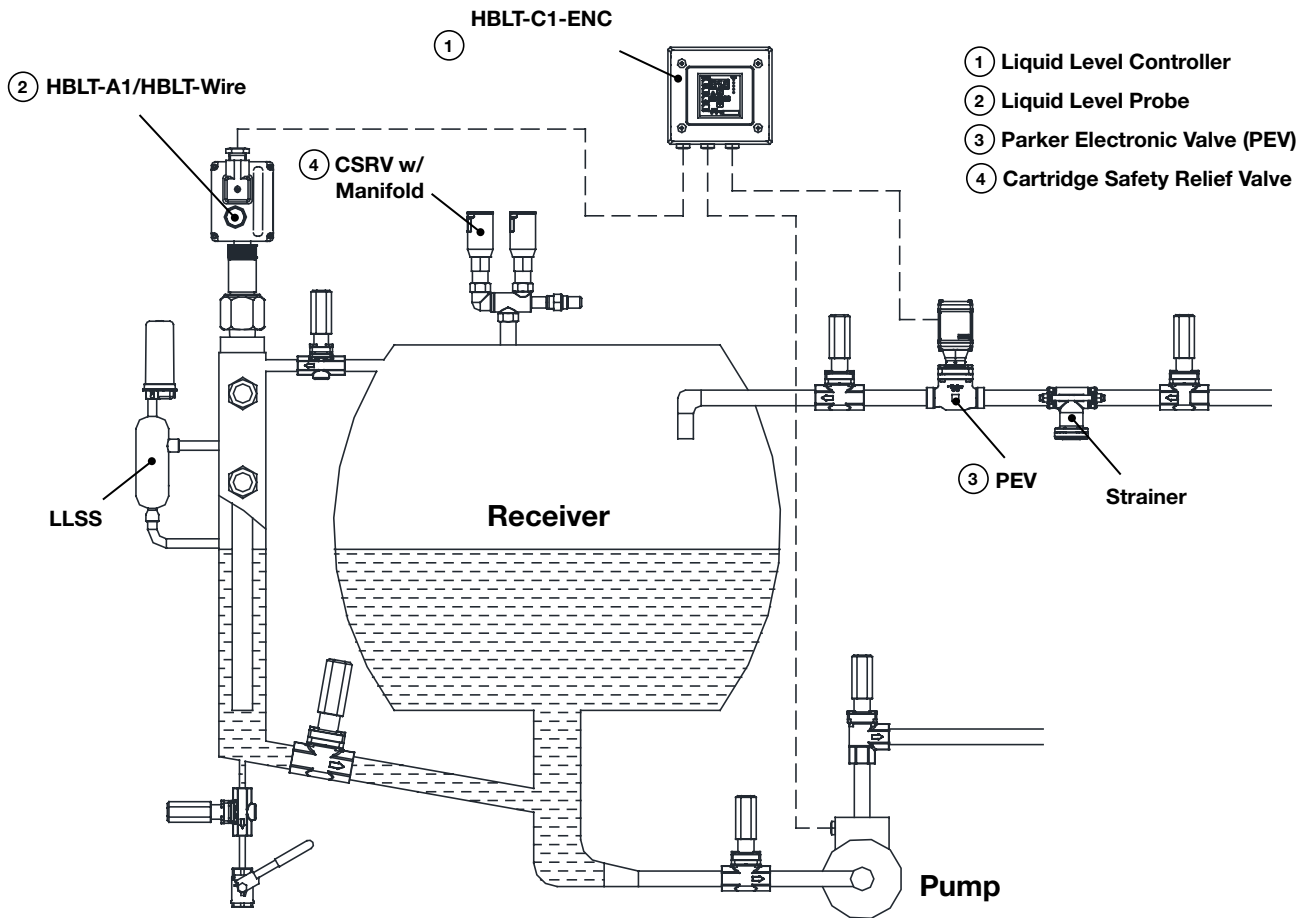
- Protection Rating:
IP67/NEMA 6

- Connections Types and Sizes:

Port Size		SW, BW SS ANSI	BW DIN
mm	inch		
20	¾	¾", 1", 1¼"	20, 25, 32
25	1		
32	1¼	1¼", 1½"	32, 40
40	1½	1½", 2"	40, 50

1. The 20 mm (¾") port is available with a standard and 70% reduced plug.

The 25 mm (1") port is available with a standard and 40% reduced plug.



Application Example: Low Pressure (LP) Liquid Level Control